

Quick Guide to Firewise Shrubs

How to incorporate Firewise shrubs into your landscape:

- Select the “right plant for the right place,” by choosing plants that are well adapted to the specific conditions where they are to be planted. Also consider the shrub’s flammability characteristics.
- **Highly flammable** shrubs should be planted beyond the defensible space, 30 feet or more from the house.
- **Moderately flammable** shrubs may be planted in isolated landscape beds within the defensible space, at least 15 feet from the house.
- **Low flammability** shrubs can be planted within the defensible space, 6 feet or more from the house.
- Conduct routine landscape maintenance, such as pruning shrubs, to maintain vertical and horizontal separation from other plants.
- Periodically remove dead or diseased plant material from plants within your home landscape.
- Remember, there are no “fireproof” plants. All plants and organic mulches burn in extreme weather or fire conditions.

Did you know you can select shrubs based on their flammability?

Researchers at the USDA Forest Service, University of Florida, and the National Institute of Standards and Technology have developed flammability categories to indicate how easily and intensely a shrub will burn.

Moderate Flammability

Use cautiously in isolated landscape beds within the defensible space, 15 feet or more from the house.

High Flammability

Plant these shrubs 30 feet or more away from the house. Maintain them regularly.



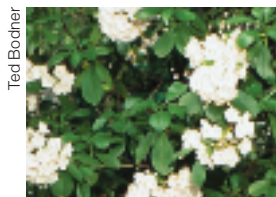
Chinese juniper
Juniperus chinensis



Dwarf yaupon
Ilex vomitoria



Gallberry
Ilex glabra



Mountain laurel
Kalmia latifolia



Ashe juniper
Juniperus ashei



Boxwood
Buxus microphylla
var. *koreana*



Pipestem
Agarista populifolia



Azalea
Azalea obtusum



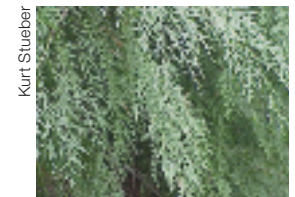
Glossy abelia
Abelia x grandiflora



Rhododendron
Rhododendron
x chionoides



Blue holly
Ilex x meservea



Leyland cypress
Cupressocyparis leylandii

Low Flammability

Shrubs suitable for planting within the defensible space; plant 6 feet or more from the house.



Adam's needle
Yucca filamentosa



Anisetree
Illicium floridanum



Arrowwood
Viburnum dentatum



Bayberry
Myrica pennsylvanica



Beautyberry
Callicarpa dichotoma



Bigleaf hydrangea
Hydrangea macrophylla



Butterfly bush
Buddleia davidi



Camellia
Camellia japonica



Coontie
Zamia pumila



Foster holly
Ilex x attenuata



Gardenia
Gardenia jasminoides



Klein's forsythia
Forsythia x intermedia



Oakleaf hydrangea
Hydrangea quercifolia



Oleander
Nerium oleander



Pittosporum
Pittosporum tobira



Rosebay
Rhododendron maximum



Scarlet firethorn
Pyracantha coccinea



Shrubby cinquefoil
Potentilla fruticosa



Sweet pepperbush
Clethra alnifolia



Walter's viburnum
Viburnum obovatum



Weigela
Weigela florida



Winterberry
Ilex verticillata

For more information, contact Annie Hermansen-Baez of the USDA Forest Service, Southern Research Station at ahermansen@fs.fed.us, (352) 376-3271.

Also visit: www.interfacesouth.org/products/research.html

Additional Resources

- For more information on Firewise shrubs, see “Selecting and Maintaining Firewise Plants for Landscaping” at www.interfacesouth.org/products/fact_sheets/Selecting_Firewise_Shrubs.pdf
- To estimate the flammability of shrub and other plant species not shown here, see “Preparing a Firewise Plant List for WUI Residents” at www.interfacesouth.org/products/fact_sheets/Preparing_Firewise_Plant_List.pdf or www.interfacesouth.org/products/flammability_key.html
- For Firewise landscaping tips, see www.interfacesouth.org/products/fact_sheets/Selecting_Maintaining_Firewise_Plants_Landscaping.pdf and www.interfacesouth.org/products/fact_sheets/Reducing_Wildfire_Risk.pdf

The photographs in this fact sheet were gathered from various sources. All copyrighted photographs in this publication were used with the permission of the photographers. Shrubs are listed in alphabetical order and not by their intensity of flammability within each category.

